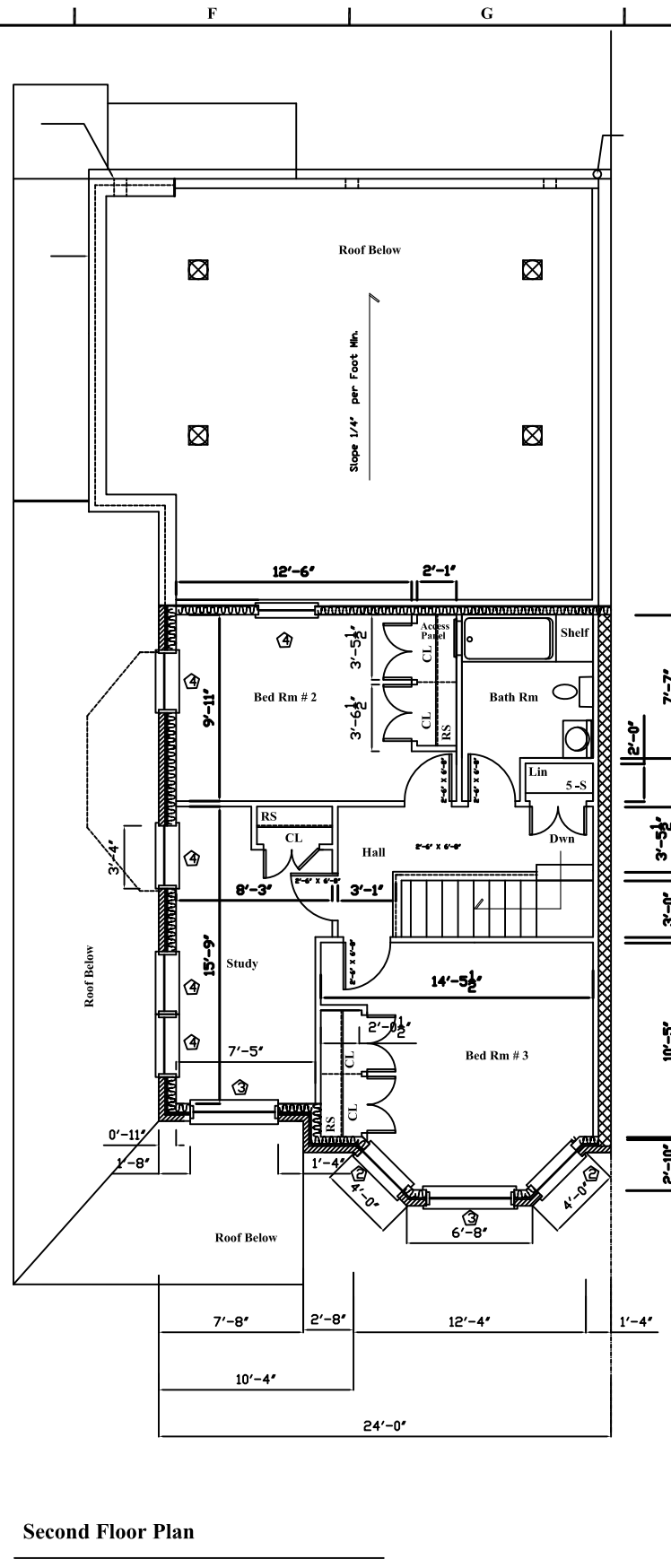


First Floor Plan - Unit "C"



Second Floor Plan

Wheelchair Accessible House - 3200 Cecil B. Moore Avenue
 Plan is for information purposes only. It is subject to revision without notice.

Date: 5/20/09 File Name:	
Designed by: Robert Johnson Jr. Drawn by: B.J.R.	Title: C.O.
ENVIRONMENTAL ATELIER ARCHITECTS & PLANNERS 1444 69TH AVENUE PHILADELPHIA, PA 19126 CHARLES E. PINKARD AIA, AICP, PRINCIPAL	
Strawberry Mansion Project 32nd & Cecil B. Moore Ave. Community Ventures Inc. 1501 Cherry Street Philadelphia 19102 Pa.	
A-7 SHEET 7 OF 14 Floor Plans	